

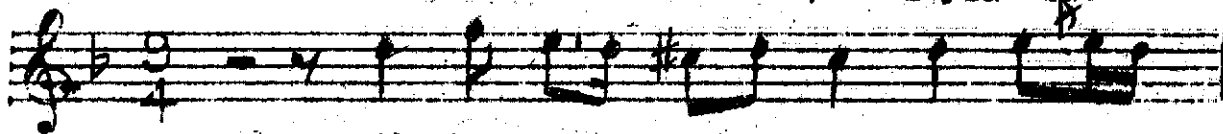
Ağır Aksak

SULTANİYEĞAH SAHKE

çeste ve Güfte

(Dilberim terk-i sebâta)

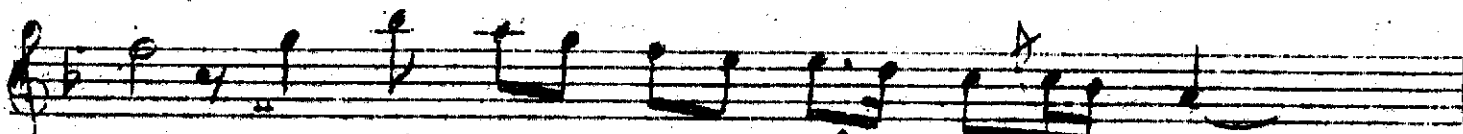
Leylâ Sâz



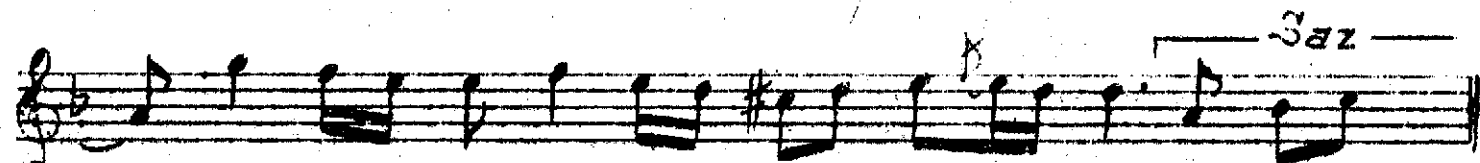
Dil be rim..... ter.....



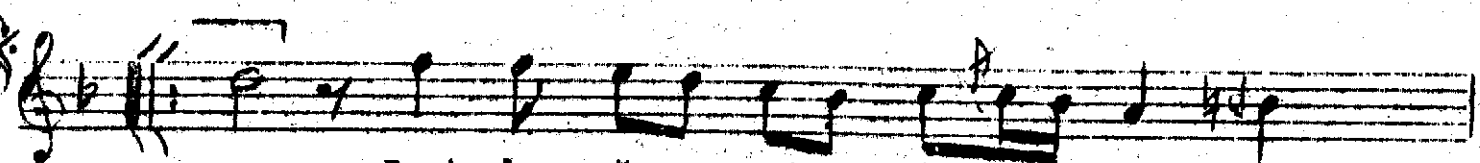
..... ki se bâ..... ta.....



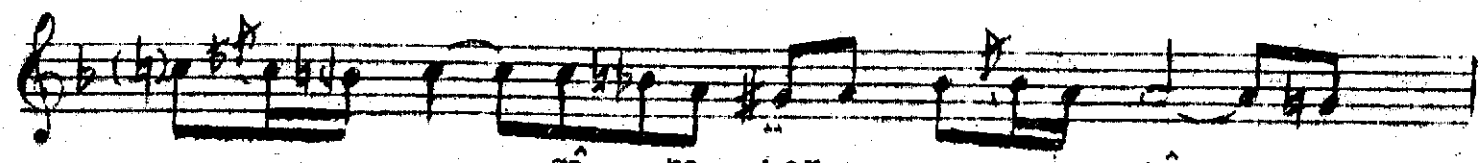
... her za ma..... nâ



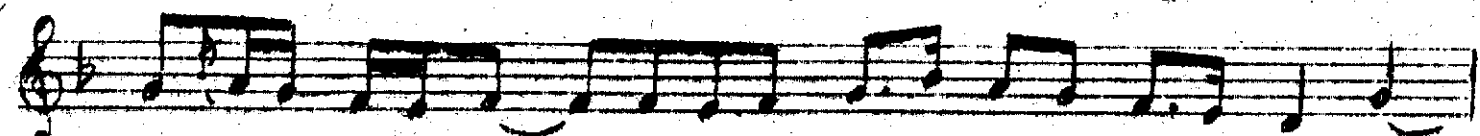
.. nâ..... de dir



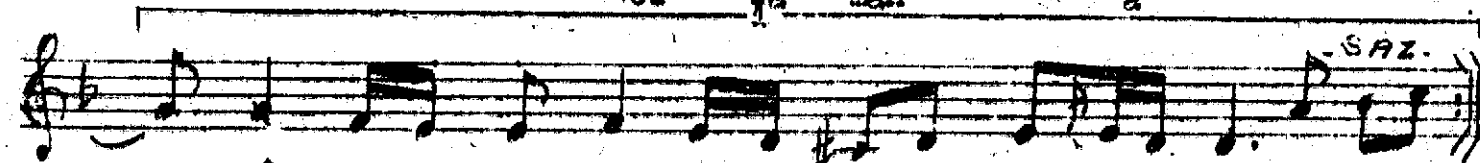
Dest lu ğa..... bi
Sev di ğim kay



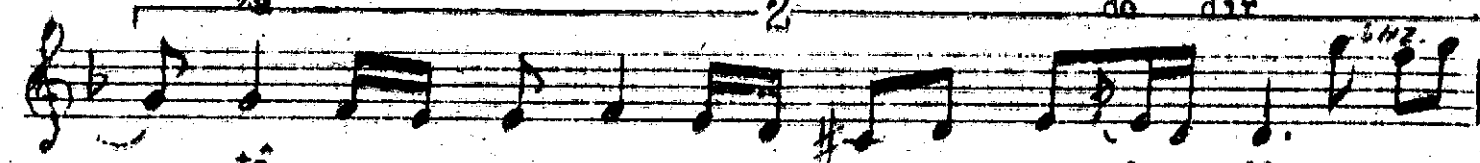
..... gâ... ne her..... câ



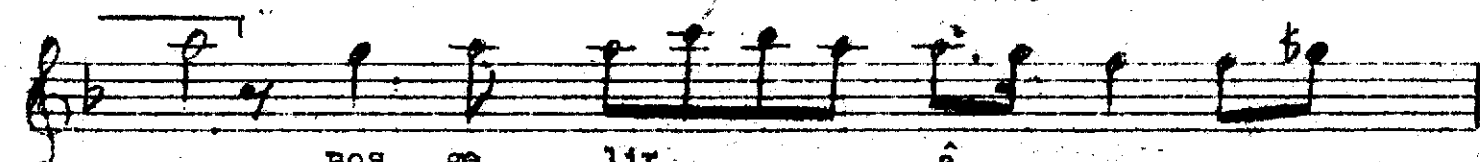
..... i .. li ğo..... uf.....
her za man â



tâ de dir
za de dir



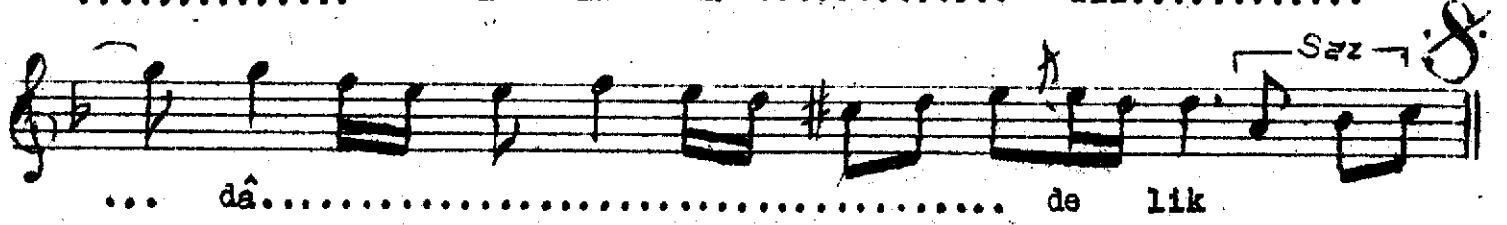
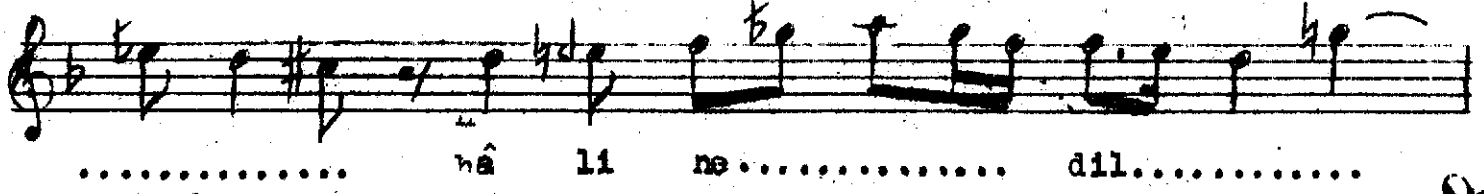
tâ de dir



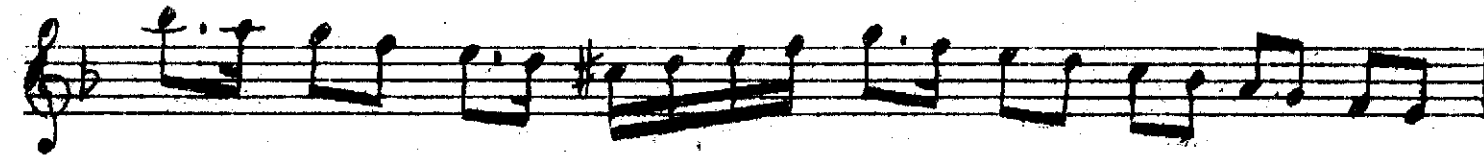
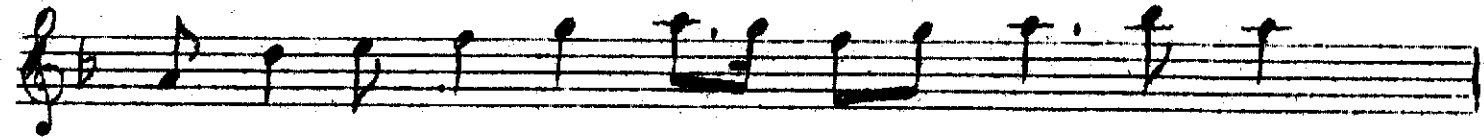
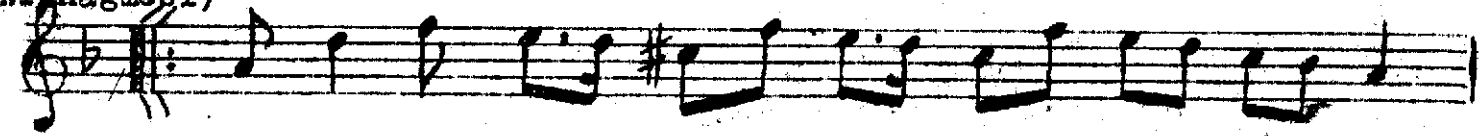
Hoş ge lir..... â



Sultanîyegân Şarkının devamı



(Aranagmesi)



Dilberim terk-i sebâtê her zaman âmâdedir
Dostluğâ bigâne hercârîgê üftâdedir
Hoş gelir âvarelik o hâline dil dâdedir
Sevdiğim kayd-î vefâdan dâima âzâdedir.

Sebat	-	Sabır
Âmâde	-	Hazır
Bigâne	-	Yabancı
Üftâde	-	Düşkün
Âvarelik	-	Başboşluk
Dildâde	-	Gönül vermiş
Âzâde	-	Serbest